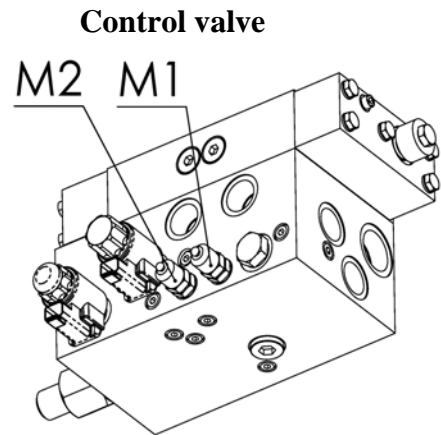


Hydraulic data Cargo Floor®

Name : Product : O Wet O Dry
Registration :
Date :

Measured by :
System number :

Persure filter : Clean dirty
Return filter : Clean dirty



Cargoton	M1 (pressure)		M2 (return)	
		Norm (Max)	Measured	Norm (Max)	Measured
Empty	Measurement				
Unloading	Moving cylinder 1	50 bar bar	10 bar bar
Unloading	Moving cylinder 2	50 bar bar	10 bar bar
Unloading	Moving cylinder 3	50 bar bar	10 bar bar
Unloading	Three cylinders at once	30 bar bar	10 bar bar
Loading	Moving cylinder 1	60 bar bar	10 bar bar
Loading	Moving cylinder 2	60 bar bar	10 bar bar
Loading	Moving cylinder 3	60 bar bar	10 bar bar
Loading	Three cylinders at once	25 bar bar	10 bar bar
Full					
	Moving cylinder 1	225 bar bar	10 bar bar
	Moving cylinder 2	225 bar bar	10 bar bar
	Moving cylinder 3	225 bar bar	10 bar bar
	Three cylinders at once	225 bar bar	10 bar bar
	Safety relief valve	225 bar bar		
		Norm		Measured	
	Pump pressure	Min. 250 bar	 bar	
	Pump capacity	Max. 110 liter/min.	 liter/min.	
	Oil temperature	Max. 70 °C	 °C	